

TORU

Unleash the dragon in you!



CONTENTS

4 DRAGONS

CONTENTS WITH A CARD SHEET

1 OBJECT OF THE GAME

TO WIN!



COLLECT SETS OF COINS AS YOU CHANT AND PASS THEM AROUND THE TABLE.

AS SOON AS YOU HAVE A **FULL HOUSE** (ANY 3 MATCHING COINS AND ANY 4 MATCHING POINTS), GRAB A DRAGON TO SCORE POINTS.

THE FIRST TO SCORE 8 POINTS WINS TORU.

1ST GAME



PUSH THE DRAGON TOKENS OUT OF THEIR CARD SHEET.

2 SET-UP

SORT THE COINS INTO MATCHING SETS OF 4. PLACE A COIN RACK IN FRONT OF EACH PLAYER.



YOU WILL NEED

NO. OF PLAYERS	DRAGONS	DRAGON TOKENS	COINS
5	ALL	ALL	ALL 9 SETS +3 STAR COINS
4	3	6 (COLOURS MUST MATCH DRAGONS)	ANY 7 SETS +3 STAR COINS
3	2	4 (COLOURS MUST MATCH DRAGONS)	ANY 5 SETS +3 STAR COINS

ENSURE SCORING MARKER IS SET TO THIS POSITION.

BEFORE YOU GO ANY FURTHER, PLACE ANY SPARE COINS BACK IN THE BOX!

3 ON EACH ROUND

1 LAY THE COINS FACE DOWN AND SHUFFLE THEM AROUND.

2 EACH TAKE 7 COINS AND PLACE THEM ON YOUR RACK SO THAT ONLY YOU CAN SEE THEM. PUT SPARE COINS TO ONE SIDE.

3 PLACE THE DRAGONS IN THE CENTRE, WITHIN REACH OF EVERY PLAYER.

4 PLACE THE MATCHING COLOURED DRAGON TOKENS (2 PER DRAGON) FACE DOWN AND



5 TAKE 1 DRAGON TOKEN EACH. LOOK AT IT SECRETLY, THEN PLACE IT FACE DOWN NEXT TO YOUR RACK. AIM TO GRAB A DRAGON OF THE SAME COLOUR LATER IN THE GAME. WITHOUT LOOKING AT THEM, PLACE SPARE DRAGON TOKENS TO ONE SIDE.

YOU WILL NEED THESE COINS AND TOKENS FOR THE NEXT

4 HOW TO PLAY

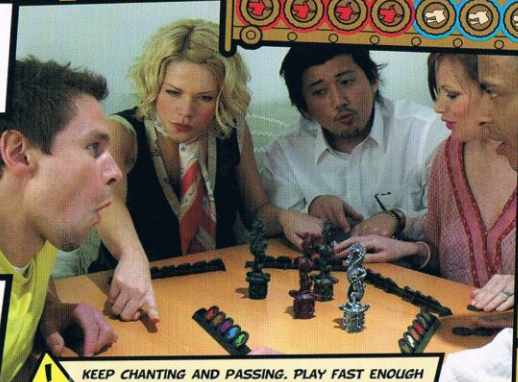
A **FULL HOUSE** IS ANY 3 MATCHING COINS AND ANY 4 MATCHING COINS.

FULL HOUSE

ALL AT THE SAME TIME

LOOK AT YOUR COINS AND DECIDE WHICH SETS YOU WANT TO COLLECT. PLACE A COIN YOU DON'T WANT FACE DOWN IN FRONT OF YOU. WITH YOUR LEFT HAND, SLIDE THE COIN TO THE PLAYER ON YOUR LEFT AS YOU ALL CHANT "**TO- RU**" FULL BLAST...

TO...RU



WITH YOUR RIGHT HAND, PICK UP THE COIN PASSED TO YOU FROM THE RIGHT AS YOU SHOUT "**-RU**". IF YOU WANT TO KEEP IT, PUT IT ON YOUR RACK AND PICK ANOTHER COIN TO PASS. IF YOU DON'T, PASS IT STRAIGHT TO YOUR LEFT HAND...

KEEP CHANTING AND PASSING. PLAY FAST ENOUGH TO CHANT "**TORU**" AS ONE WORD AS YOU PLAY.

5 ENDING THE ROUND

THE SECOND YOU GET A **FULL HOUSE**, GET GRABBING! AIM FOR THE DRAGON THAT MATCHES YOUR DRAGON TOKEN. LET OUT A VICTORY CRY OF "**TORU**" AS YOU GRAB.

AS SOON AS YOU SEE SOMEONE ELSE GRAB FOR A DRAGON, GET GRABBING TOO, EVEN IF YOU HAVEN'T GOT A **FULL HOUSE**. THERE IS ALWAYS ONE LESS DRAGON THAN PLAYER. DON'T BE THE ONE LEFT EMPTY-HANDED!

PLAYERS MAY PRETEND TO GRAB FOR A DRAGON WITHOUT HAVING A **FULL HOUSE**. IF YOU'RE FOOLISH ENOUGH TO FALL FOR IT AND GRAB A DRAGON WHEN NOBODY HAS A **FULL HOUSE**, YOU LOSE A POINT. IF THIS HAPPENS, MARK THE LOST POINT ON THE RACK AND RESUME THE ROUND WHERE YOU LEFT OFF.



7 NEXT ROUND

PUT ALL COINS & TOKENS (INCLUDING SPARES) BACK IN THE MIDDLE.

FOR LESS THAN 5 PLAYERS, MAKE SURE YOU USE ONLY THE COINS YOU COUNTED OUT FOR THE NUMBER OF PLAYERS YOU HAVE (KEEP THE ONES IN THE BOX SEPARATE).

THE PERSON WHO GOT THE LAST **FULL HOUSE** AND STARTED THE GRAB GETS TO SET THE DRAGONS IN THE CENTRE.

GO BACK TO **ON EACH ROUND** AND START AGAIN.

6 SCORING

MARK YOUR SCORE ON YOUR COIN RACK.

DRAGON MATCHES TOKEN

DRAGON DOESN'T MATCH TOKEN

DRAGON DOESN'T MATCH TOKEN

DRAGON DOESN'T MATCH TOKEN

WINNING

THE FIRST PLAYER WITH 8 POINTS WINS THE GAME.

8 RESOLVING A TIE

IF 2 OR MORE PLAYERS REACH 8 POINTS AT THE SAME TIME, THEY MUST PLAY A 'SUDDEN DEATH' ROUND. PLACE 1 DRAGON, 14 COINS AND 1 STAR COIN FACE DOWN IN THE MIDDLE. SHUFFLE THE COINS.

ON THE COUNT OF 3, ALL TIED PLAYERS TURN OVER A COIN. AS SOON AS YOU SEE A STAR, EVERYONE GRABS!

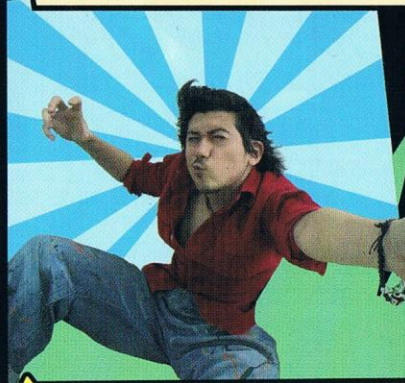
TORU extreme!



FOR AN EXTRA TWIST, THE STAR COINS BECOME MASTER COINS...
 GET A **FULL HOUSE** AS NORMAL (ANY 3 PLUS ANY 4 MATCHING COINS) **OR** BY COLLECTING ONLY ALL 3 STAR COINS.




! IF YOU HAVE LESS THAN THE FULL SET OF STAR COINS AT THE END OF A ROUND, YOU LOSE POINTS.

ARE YOU SHARP ENOUGH TO RISK IT?



extreme! SCORING

AFTER ADDING UP YOUR SCORES AS NORMAL, SUBTRACT POINTS FOR STRAY STAR COINS TO MAKE YOUR TOTAL. MARK YOUR TOTAL SCORE ON YOUR COIN RACK.

-  = LOSE 1 POINT
-  = LOSE 2 POINTS
-  = LOSE NO POINTS

! AGREE WHETHER YOU ARE PLAYING 'TORU' OR 'TORU EXTREME' BEFORE YOU START!